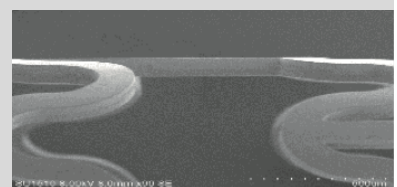
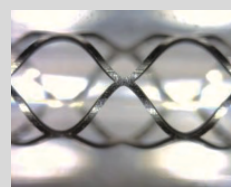
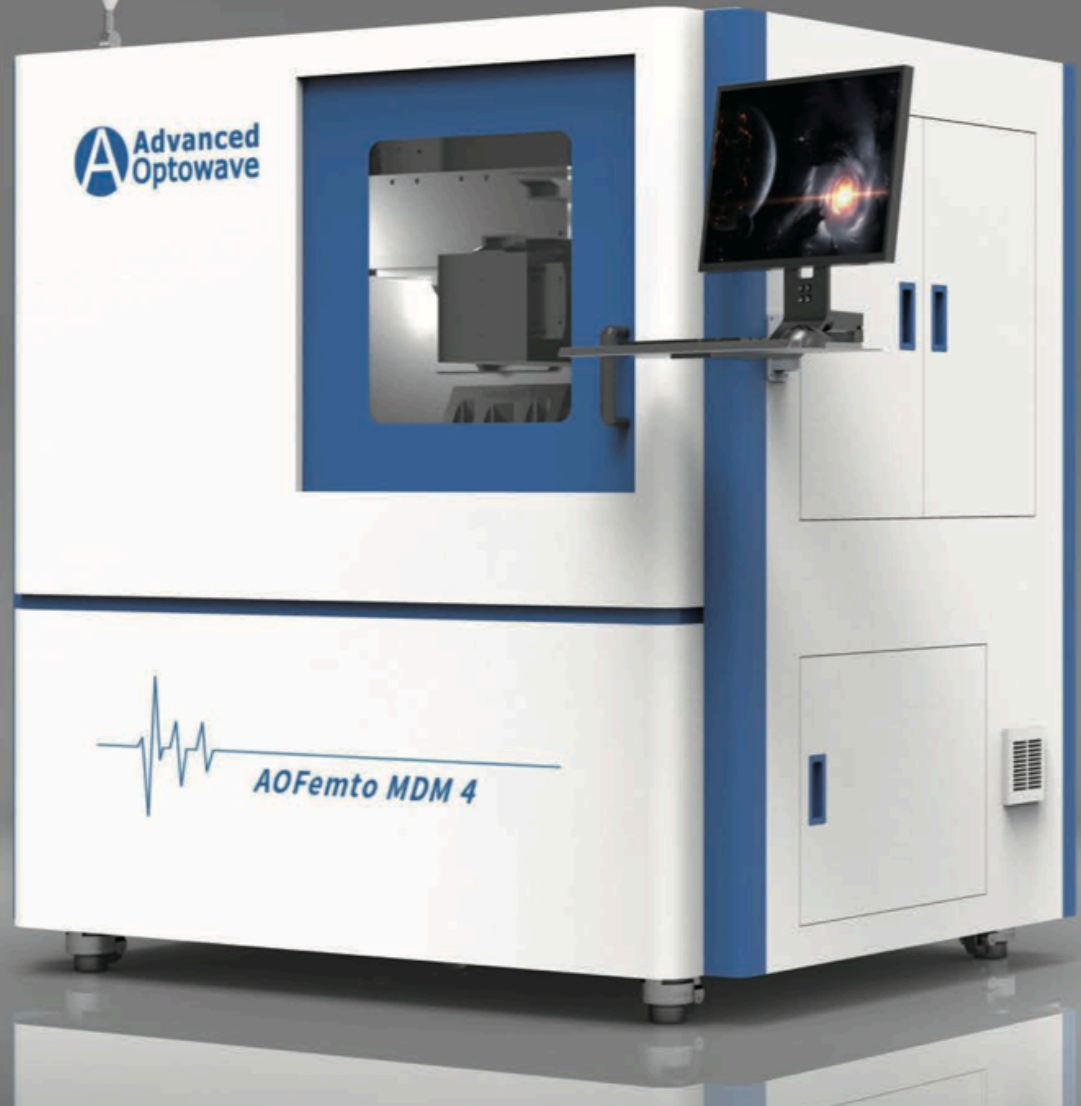


FEATURES & BENEFITS

- AOC AOFemto femtosecond laser, 1030/515nm, <800fs, 1MHz max, >10W@1030, >5W@515
- IR/GR dual wavelength laser
- 4 synchronized axes, XYZA
- coaxial and offaxial vision system
- Highly integrated GUI, including laser control, motion control, machine vision, I/O
- NC programming Cagila CAM system
- Wet cutting optional



INNO LASER TECHNOLOGY CORPORATION LIMITED.

3F, Qingyi Building, No.8 Langshan 2nd road, North part of Hii-tech industrial Park, Nanshan District, Shenzhen, China

Tel: +86-755-8635-0999 | Fax: +86-7558635-0000

Email: info@inno-laser.com | [Http://www.inno-laser.com](http://www.inno-laser.com)

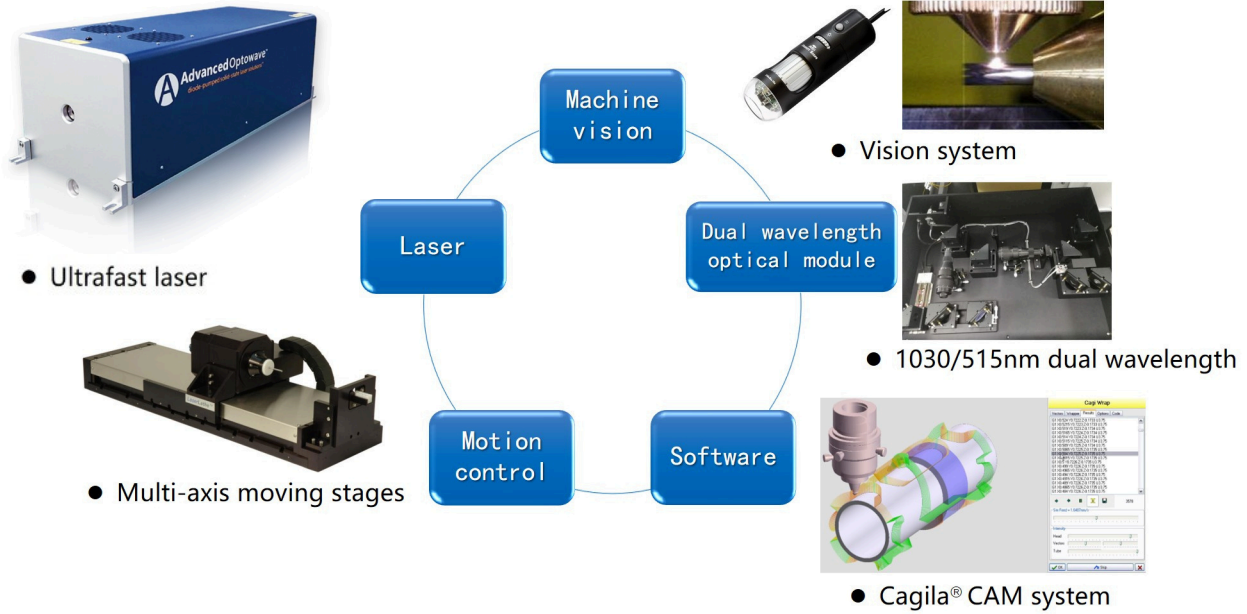
ADVANCED OPTOWAVE CORPORATION

40 Fleetwood Ct, Ronkonkoma, NY 11779 USA

Tel: +1 (631)-750-6035

Fax: +1(631)-803-4445

Email: info@a-optowave.com | [Http://www.a-optowave.com](http://www.a-optowave.com)



SIZE & WEIGHT	AOFemto-MDM-4
Depth	1300mm (51 in.)
Height	1840mm (72.4 in.)
Width	1775mm (70 in.)
Weight	Approx. 4000 lbs
LASER SYSTEM	
AOFemto™-1030-515-10 femtosecond lasers	
POSITIONING X LINEAR AXIS	
Travel Range	300mm
Positioning Accuracy	±0.001mm
Repeatability	±0.0005mm
Max. Speed	2000mm/s
POSITIONING Y LINEAR AXIS	
Travel Range	50mm
Positioning Accuracy	±0.002mm
Repeatability	±0.001mm
POSITIONING Z LINEAR AXIS	
Travel Range	50mm
Positioning Accuracy	±0.007mm
Repeatability	±0.0005mm
ROTARY A AXIS	
Travel Range	360°
Positioning Accuracy	±5"
Repeatability	±3"
Max. Speed	300rpm
ELECTRICITY	
Power	5.5kW
Nominal Voltage	3P 220VAC 3L+N+PE
Nominal Frequency	50/60 Hz
PNEUMATIC PROVISION	
Compressed air	0.5-0.7 Mpa
Processed Gas	Nitrogen, Argon <1.5Mpa
LASER SAFETY CLASS	
CDRH Class 1 Enclosure	

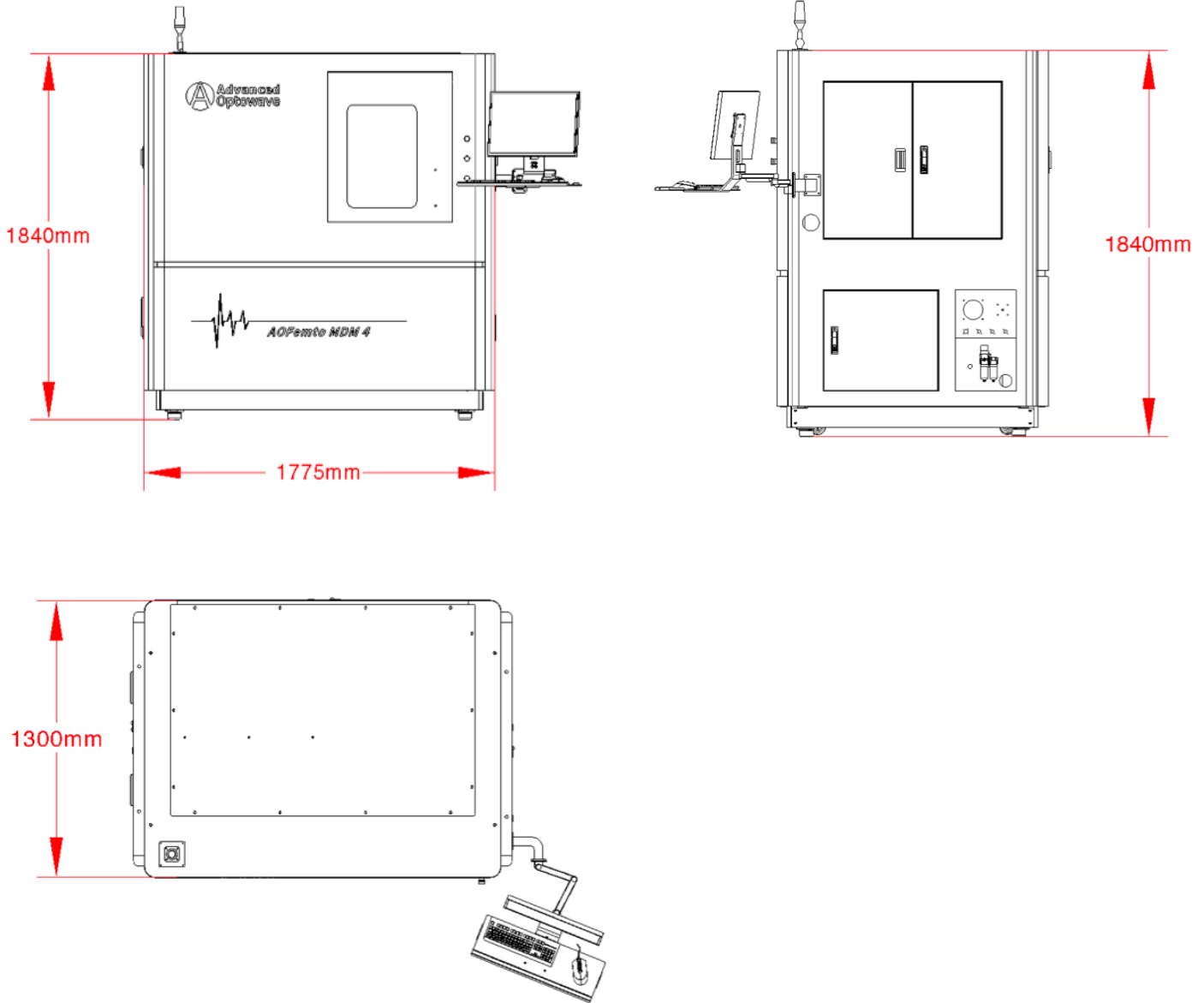
INNO LASER TECHNOLOGY CORPORATION LIMITED.

3F, Qingyi Building, No.8 Langshan 2nd road, North part of Hii-tech industrial Park, Nanshan District, Shenzhen, China
 Tel: +86-755-8635-0999 | Fax: +86-7558635-0000
 Email: info@inno-laser.com | Http://www.inno-laser.com

ADVANCED OPTOWAVE CORPORATION

40 Fleetwood Ct, Ronkonkoma, NY 11779 USA
 Tel: +1 (631)-750-6035
 Fax: +1(631)-803-4445
 Email: info@a-optowave.com | Http://www.a-optowave.com

MECHANICAL SPECIFICATIONS



INNO LASER TECHNOLOGY CORPORATION LIMITED.

3F, Qingyi Building, No.8 Langshan 2nd road, North part of Hii-tech industrial Park,
 Nanshan District, Shenzhen, China
 Tel: +86-755-8635-0999 | Fax: +86-7558635-0000
 Email: info@inno-laser.com | Http://www.inno-laser.com

ADVANCED OPTOWAVE CORPORATION

40 Fleetwood Ct, Ronkonkoma, NY 11779 USA
 Tel: +1 (631)-750-6035
 Fax: +1(631)-803-4445
 Email: info@a-optowave.com | Http://www.a-optowave.com