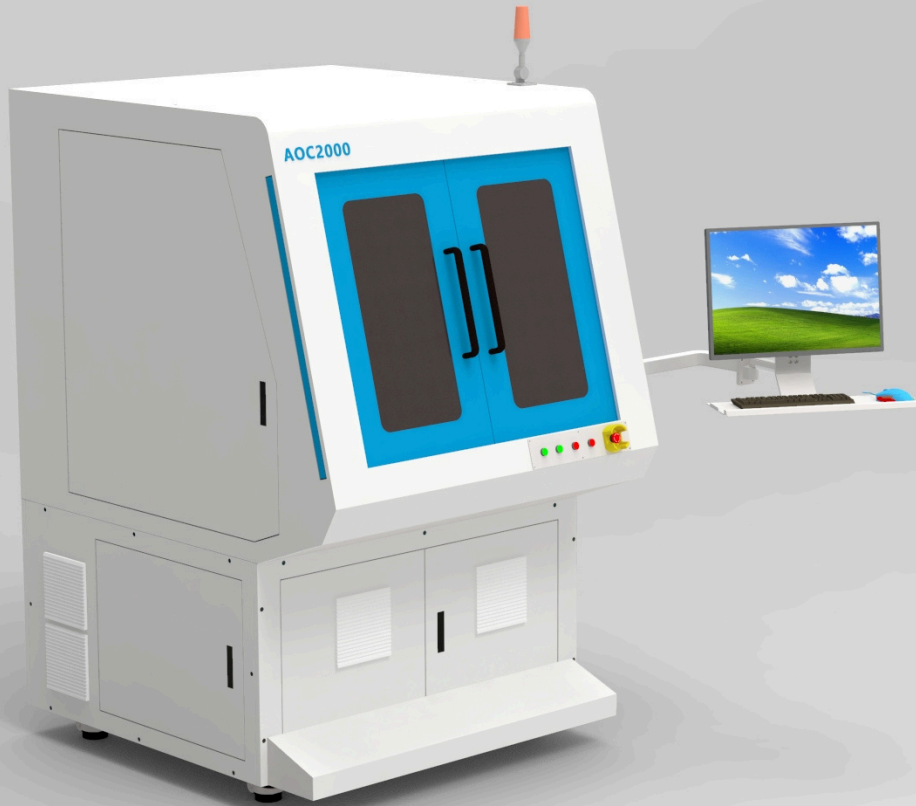


High Precision Laser Micro-processing system

The AOC2000 is a highly integrated laser micro-processing system designed for both industrial and medical applications. The platform can be integrated with multiple lasers and laser wavelengths, as well as various motion stages options. Equipped with either off-axis or coaxial vision systems, high accuracy of laser beam positioning can be achieved.

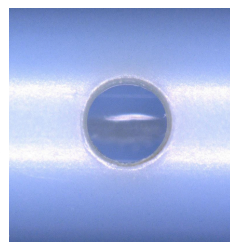
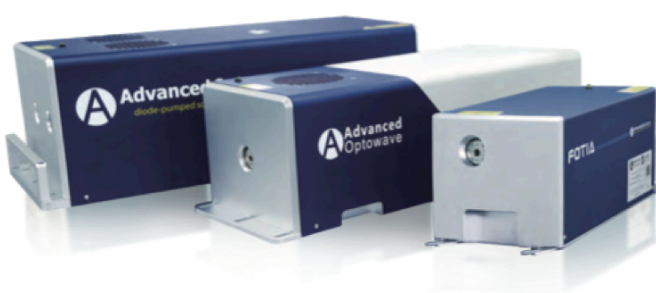


FEATURES & BENEFITS

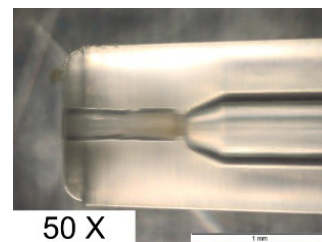
- Class 1 system enclosure
- High ergonomic design and safety standards
- State-of-the-art Pico and Femto ultrashort pulse lasers
- High dynamic performance galvoscanners
- XYZ servo axes for positioning, motion, and focal height adjustment
- Co-axial CCD camera
- Rotary axis
- Options available

APPLICATIONS

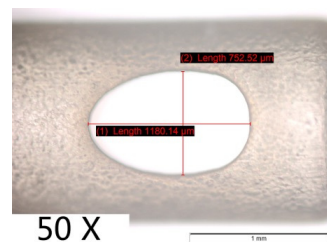
- Medical tube drilling
- Polymer stent processing
- Catheter drilling or singulation
- Polymer tube marking



Polymer tube drilling with fs-Green laser



Septum tube internal drilling with fs-Green laser



Medical sleeve cutting with fs-Green laser

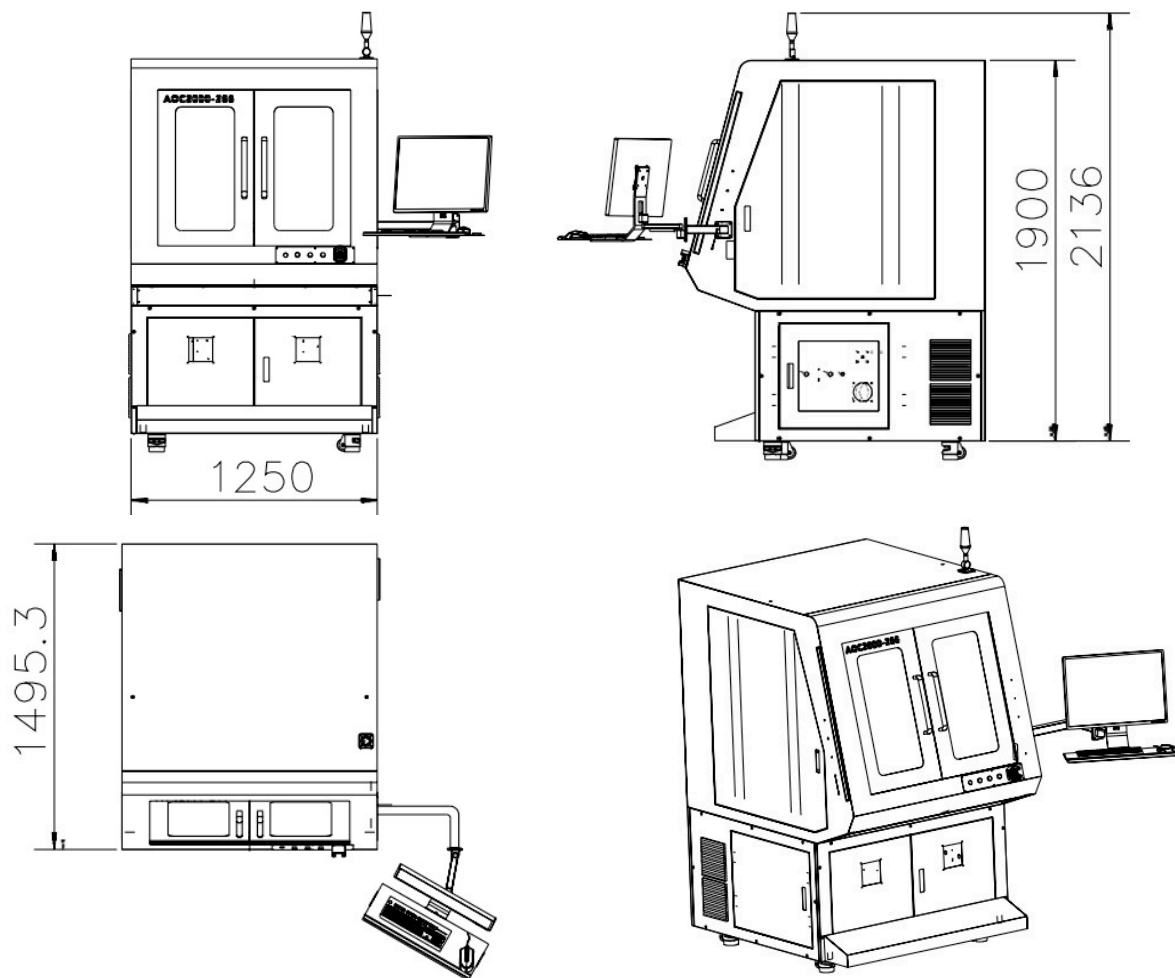
INNO LASER TECHNOLOGY CORPORATION LIMITED.

3F, Qingyi Building, No.8 Langshan 2nd road, North part of Hii-tech industrial Park, Nanshan District, Shenzhen, China
Tel: +86-755-8635-0999 | Fax: +86-7558635-0000
Email: info@inno-laser.com | Http://www.inno-laser.com

ADVANCED OPTOWAVE CORPORATION

40 Fleetwood Ct, Ronkonkoma, NY 11779 USA
Tel: +1 (631)-750-6035
Fax: +1(631)-803-4445
Email: info@a-optowave.com | Http://www.a-optowave.com

SIZE & WEIGHT	AOC2000
Depth	1495mm (58.8 in.)
Height	2136mm (84.1 in.)
Width	1250mm (49.2 in.)
Weight	2,700 lbs
AREA NECESSARY	
Depth	1995mm (78.5 in.)
Width	1750mm (68.9 in.)
Area (m ²)	3.5 m ²
POSITIONING AXIS	
X-axis	350mm travel, 500mm/s
Y-axis	350mm travel, 500mm/s
Z-axis	200mm travel, 20mm/s
MAXIMUM WEIGHT OF WORK PIECE	
Max. Weight of Work Piece (incl. clamping)	25 Kg
Max. Dimension of Work Piece	300mm×300mm
ELECTRICITY	
Fuse	25(A)
Nominal Voltage	1P 220VAC
Nominal Frequency	50/60Hz
PNEUMATIC PROVISION	
Fume extractor and compressed air system	0.4-0.7 MPa
LASER SAFETY CLASS	
CDRH class 1 laser system enclosure	



INNO LASER TECHNOLOGY CORPORATION LIMITED.

3F, Qingyi Building, No.8 Langshan 2nd road, North part of Hii-tech industrial Park,
Nanshan District, Shenzhen, China
Tel: +86-755-8635-0999 | Fax: +86-7558635-0000
Email: info@inno-laser.com | Http://www.inno-laser.com

ADVANCED OPTOWAVE CORPORATION

40 Fleetwood Ct, Ronkonkoma, NY 11779 USA
Tel: +1 (631)-750-6035
Fax: +1(631)-803-4445
Email: info@a-optowave.com | Http://www.a-optowave.com