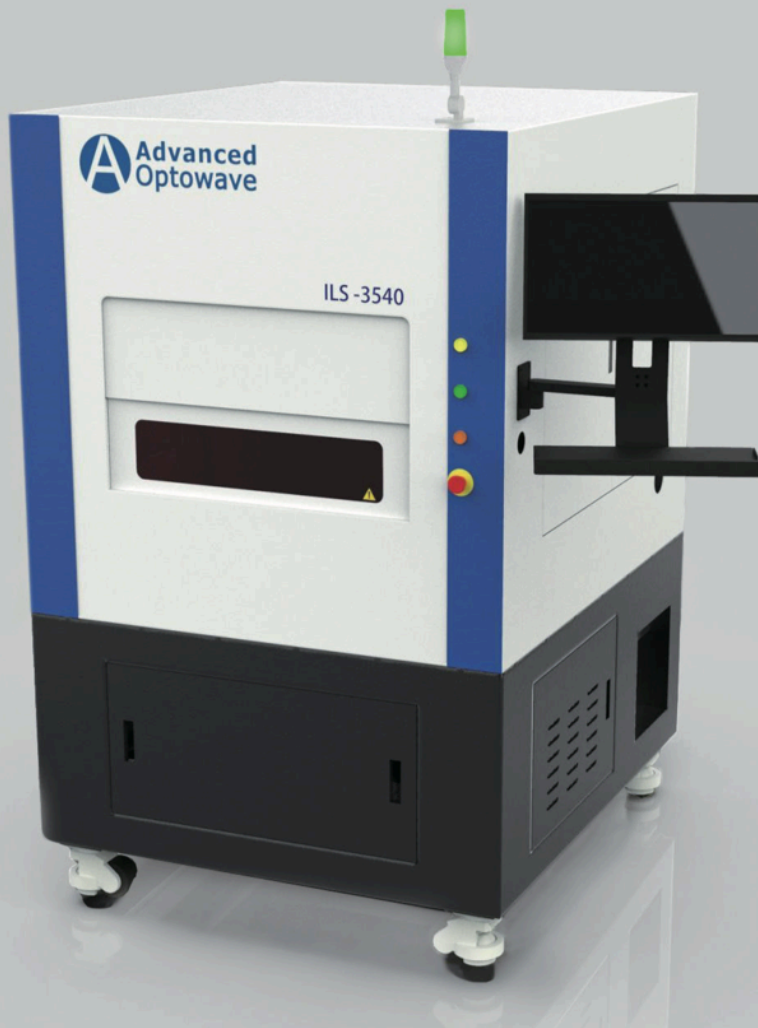
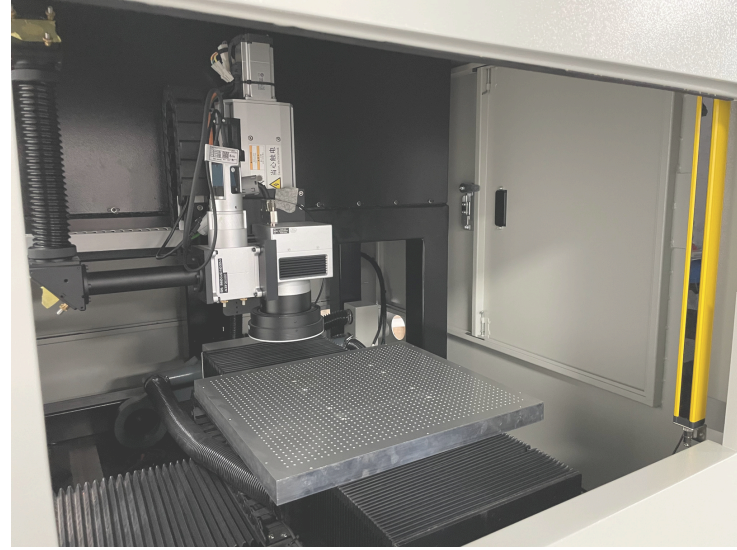


AOC1000

Laser Micromachining system

The AOC1000 is a compact laser micro-machining system for processing various materials, such as metals, alloys, ceramics, PCD, polymers, as well as FPC material. The platform can be integrated with multiple lasers and wavelengths, as well as a variety of motion stage options. The AOC1000 also offers a pro version which the precise motion stages were built on a granite base. The system is designed to achieve high precision laser micromachining.



FEATURES & BENEFITS

- High precision micromachining
- Large working chamber and automatic lifting door
- Easy to use and intuitive system software
- Coaxial vision system
- Class 1 laser enclosure with high ergonomic design

APPLICATIONS

- Cutting of metals, alloys, also delicate ones such as titanium and nitinol
- cutting of brittle materials
- Polymer processing
- FPC electronics

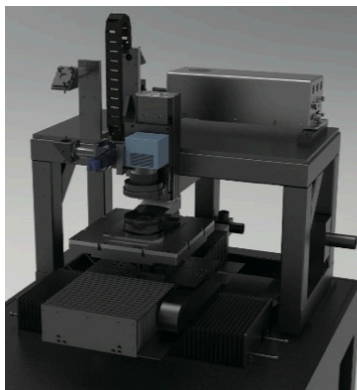
INNO LASER TECHNOLOGY CORPORATION LIMITED.

3F, Qingyi Building, No.8 Langshan 2nd road, North part of Hii-tech industrial Park, Nanshan District, Shenzhen, China
Tel: +86-755-8635-0999 | Fax: +86-7558635-0000
Email: info@inno-laser.com | Http://www.inno-laser.com

ADVANCED OPTOWAVE CORPORATION

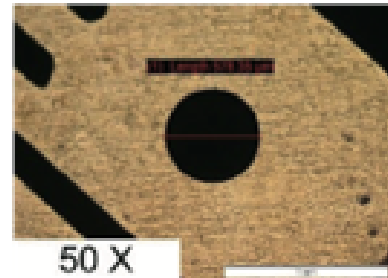
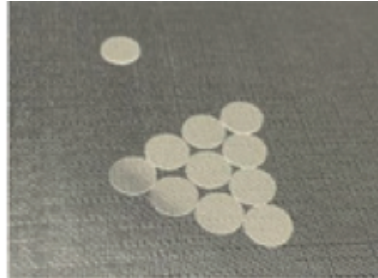
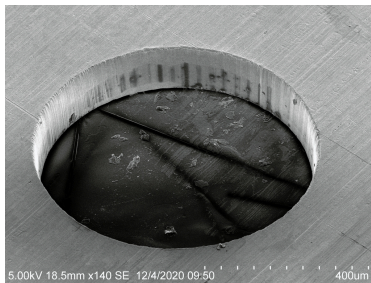
40 Fleetwood Ct, Ronkonkoma, NY 11779 USA
Tel: +1 (631)-750-6035
Fax: +1(631)-803-4445
Email: info@a-optowave.com | Http://www.a-optowave.com

TECHNICAL SPECIFICATIONS	AOC1000 Laser Micromachining System
Interface Display and Operation Data Interface	24" display and keyboard USB device, RS232
SIZE & WEIGHT	
Width	1200 mm (47.2 in.)
Depth	1370 mm (54 in.)
Height	1900 mm (74.8 in.)
Weight	2200 lbs.
AREA NECESSARY	
Width	1700 mm (67 in.)
Depth	1870 mm (73.6 in.)
Height	2400 mm (94.5 in.)
Area (m ²)	3.2 m ²
ELECTRICITY	
Fuse	25 (A)
Nominal Voltage	220VAC ±10%
Nominal Frequency	50/60 Hz
PNEUMATIC PROVISION	
Compressed Air	0.5-0.7 MPa



PRECISION MODULE

X/Y Axis Travel (mm)	300×300
Drive	Linear Servo Drive
Positioning Accuracy (mm)	±0.003
Repeatability Accuracy (mm)	±0.001
Z Axis Travel (mm)	60
Positioning Accuracy (mm)	±0.03
Repeatability Accuracy (mm)	±0.01



INNO LASER TECHNOLOGY CORPORATION LIMITED.

3F, Qingyi Building, No.8 Langshan 2nd road, North part of Hii-tech industrial Park,
Nanshan District, Shenzhen, China
Tel: +86-755-8635-0999 | Fax: +86-7558635-0000
Email: info@inno-laser.com | Http://www.inno-laser.com

ADVANCED OPTOWAVE CORPORATION

40 Fleetwood Ct, Ronkonkoma, NY 11779 USA
Tel: +1 (631)-750-6035
Fax: +1(631)-803-4445
Email: info@a-optowave.com | Http://www.a-optowave.com