

PRESENTATION

OVERVIEW OF THE DIFFERENT MODELS

The Gentec-EO monitors come in various sizes and types to cover all applications. We have monitors with or without display (PC-based) and for power or energy readings, or both. We also offer the fastest digital needle display on the market.



MAESTRO

The MAESTRO Power & Energy Meter is our top of the line display monitor with an extra-large 5.6in color LCD display and fully touch screen controls. With its unique user interface and faster electronics, it will do more, in less time, and with less effort than any other meter on the market!



COLOR LCD



See page 20



TUNER

This Power Meter presents both a large LCD display and an ultrafast needle, up to 10X faster than anything else on the market. It comes with more features than the competition, like min and max holds for both displays, comet tail needle and bar graph function. The TUNER comes in Gentec-EO's ergonomic design, with a large LCD display and easy to use direct access keys.

■ ULTRA-FAST TUNING NEEDLE

See page 24



UNO

The UNO is a simple Power Meter, with large contrast fields and direct access buttons. Its extremely low power consumption allows it to work on standard alkaline batteries, making it the monitor of choice for service technicians working in the field. With the lowest price for a display meter, the UNO is the perfect choice when looking for a reliable, entry-level power meter.

■ ECONOMICAL POWER METER

See page 26



S-LINK, P-LINK & M-LINK

The S-LINK, P-LINK and M-LINK are PC-Based Power or Energy monitors that come with unique software applications. The S-LINK comes with 1 or 2 channels and measures energy detectors at a very fast rate. It comes with a USB interface, Ethernet being available in option. The P-LINK is a small power meter, available with either a USB or RS-232 interface. A 4-Channel version is also available. As for the M-LINK, it is a Universal Power & Energy Meter that measures ALL the detectors in our product range and features a unique noise suppression method.

■ PC-BASED POWER OR ENERGY METERS

See page 28, 30 and 32

COMPARISON TABLE



See page 36



ALL-IN-ONE DETECTOR + METER

The INTEGRA is a meterless line of All-in-One detectors that combine a detector and a meter in one convenient product. The small but powerful meter of the INTEGRA Series presents a direct USB connection so you can plug it into your PC. Simply use the PC-Gentec-EO software supplied with your product! Available on all our most popular products, with either a USB or RS-232 interface and with or without External Trigger.

Watch out for the INTEGRA logo to identify the products available with INTEGRA.



WIRELESS LASER POWER METER

This new line of All-in-One detectors combine a detector and a meter with Bluetooth connectivity in one convenient product. The small but powerful meter of the BLU Series presents a Bluetooth connection so you can display the results on your mobile device with the Gentec-EO BLU app available for both iOS and Android systems. Need to use it with a PC? Simply plug in the included Bluetooth receptor and be ready to make power or energy measurements within seconds!

Watch out for the BLU logo to identify the products available with BLU.

NEW



See page 38

COMPARISON TABLE



	MAESTRO	TUNER	UNO	S-LINK	P-LINK	M-LINK	INTEGRA	BLU
DETECTOR COMPATIBILITY								
Power (Thermopiles)	•	•	•	•	•	•	•	• Some exceptions apply, see p.63
Power (Pyroelectrics -B)	•					•		
Power (Photo Detector)	•	•	•		•	•	•	
Power (Photo Detector -B)	•			•		•		
Power (THZ-D Detector)	•					•		
Energy (All Pyroelectrics)	•			•		•	•	
Energy (Thermopiles in Single Shot)	•			•	•	•	•	
Energy (Photo Detector -B)	•			•		•	•	
DISPLAY	5.6in LCD Touch Screen	3.8in LCD With Tuning Needle	3.8in LCD 32 mm Digits	None	None	None	None	None
PC INTERFACE	•			•	•	•	•	•
OUTPUTS								
USB	•			•	Standard	•	•	
USB Key Port	•							
RS-232	•			Optional	Optional		Optional	
Analog Output	•	•			•	•		
Ethernet	•			Optional				
Bluetooth								•
EXTERNAL TRIGGER	•			•		•	Optional	
FULL STATISTICAL FUNCTIONS	•			•	•	•	•	•
MAX REPETITION RATE	2 kHz (10 kHz sampling)			10 kHz/Channel		1 kHz	6 kHz	6.8 Hz
NUMBER OF CHANNELS	1	1	1	1 or 2	1	1	1	1
PRODUCT PAGE	20	24	26	28	30	32	36	38

INTEGRA

Embedded Monitor



KEY FEATURES

- 1. ALL-IN-ONE DETECTOR + METER**
Plug your detectors directly into your PC with the INTEGRA embedded monitor
- 2. INCREDIBLE PERFORMANCE**
INTEGRA detectors offer the same performance as the usual detector + monitor combination
- 3. USB OR RS-232**
INTEGRA detectors are offered with a choice of USB (standard) or RS-232 connector (in option)
- 4. EXTERNAL TRIGGER**
An external trigger is available in option on every compatible INTEGRA energy detector
- 5. COMPACT SIZE**
Perfect for the lab, OEM applications and field servicing. No need to carry a meter!
- 6. LOWER RECALIBRATION COSTS**
One Product = One Calibration. Reduce your recalibration costs by half!
- 7. UNIVERSAL SOFTWARE-PC-GENTEC-EO**
Control your INTEGRA detector with the same powerful software as the MAESTRO
- 8. CUSTOMIZABLE**
Contact us for custom cable lengths and serial commands

STANDARD

USB Model Name -INT
(available on all models)

To Detector

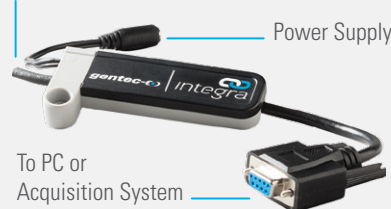


To PC

IN OPTION

RS-232 Model Name -IDR
(available on all models)

To Detector



To PC or
Acquisition System

Power Supply

External Trigger Model Name -INE
(energy detectors only)

To Detector



To PC

External
Trigger BNC

WATCH OUT FOR THIS LOGO!

AVAILABLE
WITH



SEE ALSO

ENERGY DETECTORS	40
POWER DETECTORS	66
HIGH POWER DETECTORS	102
PHOTO DETECTORS	116

Watch the Introduction video available on our website at www.gentec-eo.com



Secure it on your Optical Table

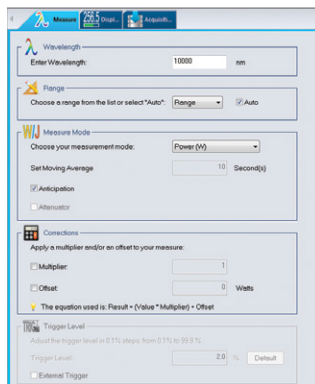
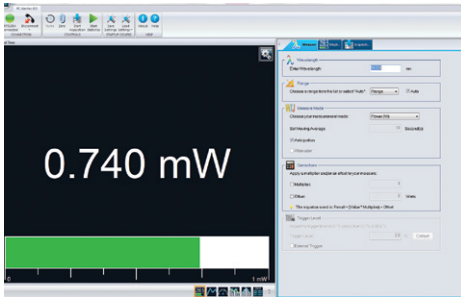
PC-GENTEC-EO

UNIVERSAL SOFTWARE FOR **INTEGRA, MAESTRO, P-LINK AND HP**

MAIN CONTROLS

Complete and easily navigable software interface with all the necessary options and tools:

- Connection:** Connect or Disconnect your device.
- Controls:** Turn the Turbo Mode ON or OFF, make a Zero to remove the thermal offset, start the Acquisition of the data and start the calculations of the Statistics associated with this data.
- Startup Config:** Save your measurements settings or Load the settings associated with an already existing file.
- Help:** Get information about the PC-Gentec-EO software and read the user manual.
- Measure:** Configure the parameters related to your measurements.
- Display:** Set the desired number of digits and settings associated with the selected display.
- Acquisition:** Enter the parameters related to the acquisition of data.



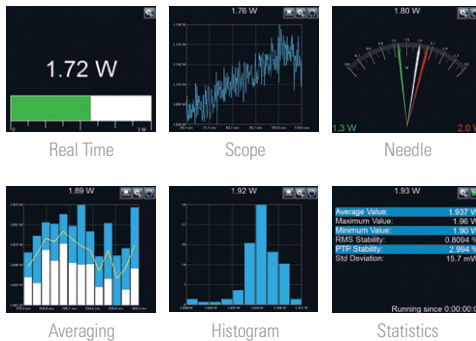
MEASUREMENT PARAMETERS

The Measure tab allows you to configure the parameters related to your measurements:

- Wavelength:** Enter the Wavelength of your laser and the software will apply the appropriate correction factor on the measurements.
- Range:** Set the power or energy Range to a fixed scale or let the software automatically adjust the scale.
- Measure Mode:** Select the type of Measurement that will be displayed (power, energy) and let the software know if you want Anticipation and if there is any Attenuation.
- Corrections:** Apply a Multiplication Factor and/or an Offset to your measurements.
- Trigger Level:** Set the Trigger Level in 0.1% steps, from 0.1% to 99.9% (in energy mode only).

MULTIPLE DISPLAYS

Select the display that suits you best and watch your measurements in real time! With the options toolbar in the bottom of the interface, you can manage the displays at your convenience:

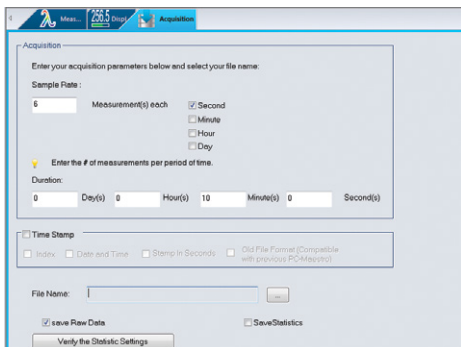


- Real Time:** Real time value and corresponding bar graph
- Scope:** Line filling graph
- Needle:** Fast analog-like needle
- Averaging:** Shows trend of laser over time
- Histogram:** Displays up to 100 bars
- Statistics:** Min, Max, Average, RMS and PTP Stability, Rep. Rate and Standard Deviation

DATA ACQUISITION

The Acquisition tab allows you to enter the parameters for data acquisition:

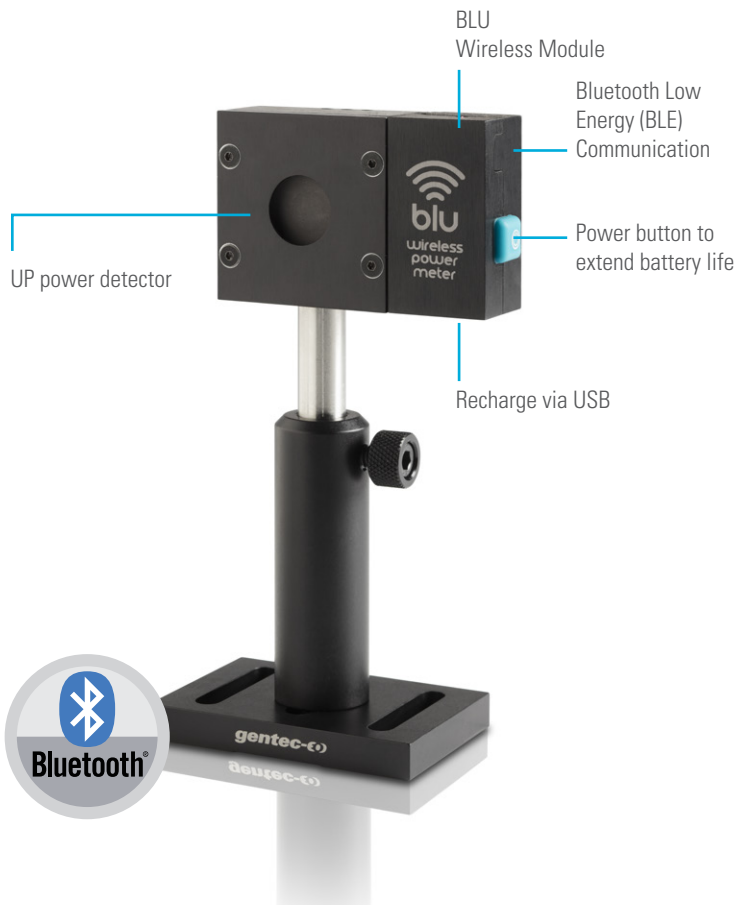
- Power Mode:** Choose a Sampling Rate (number of measurements per interval of time), a Total Duration (in days, hours, minutes and seconds) for the data acquisition, a Time Stamp for each value and the File Name and File Location. You can choose to save only the raw data and/or the statistics associated with your data acquisition.
- Energy Mode:** Choose a sampling rate (1 pulse out of X pulses), a total duration (total number of pulses) for the acquisition of data, a timestamp for each value, the file name and file location. Decide if you want to save raw data and/or the statistics associated with this data.



BLU

Wireless Bluetooth® Monitor

NEW



WATCH OUT FOR THIS LOGO!

AVAILABLE WITH



KEY FEATURES

- 1. ALL-IN-ONE DETECTOR + METER**
This new line of All-in-One detectors combine a detector and a meter with Bluetooth connectivity in one convenient product. No need to carry a meter!
- 2. SAVE 50% ON CALIBRATION COSTS**
One product = one calibration. Reduce your recalibration costs by half!
- 3. CROSS-PLATFORM SOFTWARE**
Display the results on your mobile device with the Gentec-EO BLU app available FREE on Google Play and Apple Store. Need to use it with a PC? Simply plug in the included Bluetooth receptor and use PC-Gentec-EO.
- 4. EXTENSIVE COVERAGE**
Receive data at up to 30m from the detector, with the same performance as the usual detector + monitor combination.
- 5. EASY TO SET UP**
Perfect for field service, labs and OEM applications.
- 6. GO WIRELESS**
No need to worry about cable length or monitor location.
- 7. LONG BATTERY LIFE**
The USB-rechargeable Li-ion battery lasts up to 5 continuous days with the device running

MEASURE WITH YOUR SMARTPHONE, TABLET OR PC



SEE ALSO

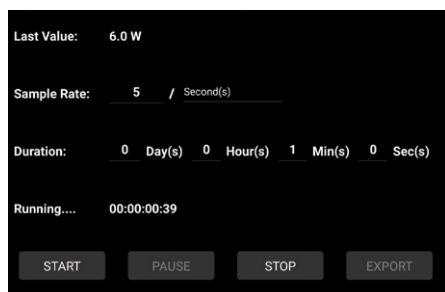
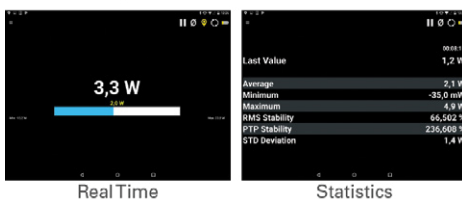
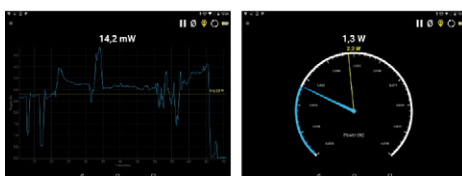
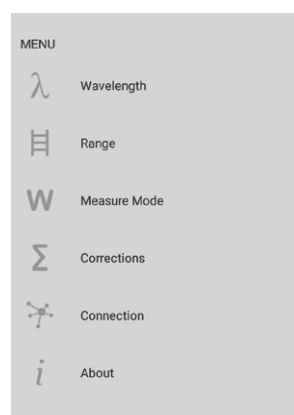
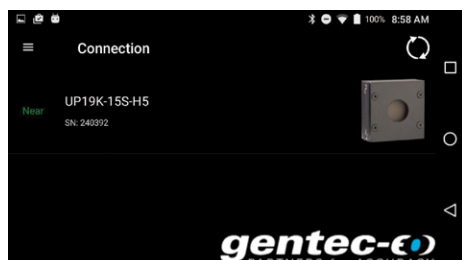
POWER DETECTORS

66

The Bluetooth® word mark and logos are registered trademarks owned by the Bluetooth SIG, Inc. and any use of such marks by Gentec-EO is under license.

BLU

FREE SOFTWARE FOR SMARTPHONES AND TABLETS



MAIN CONTROLS

Connecting a BLU device is very simple in the mobile application. Just open the app and it will automatically search for all available devices. Then, tap on the desired device in the list.

If there are no devices within range, the app will propose a simulator.

When a BLU detector is connected to a phone or computer, no other device can communicate with it.

MEASUREMENT PARAMETERS

The Menu tab, available with the icon or by swiping from the left of the screen, allows you to configure the parameters related to your measurements:

Wavelength: Enter the Wavelength of your laser and the software will apply the appropriate correction factor on the measurements.

Range: Set the power or energy Range to a fixed scale or let the software automatically adjust the scale.

Measure Mode: Select the type of Measurement that will be displayed: Power, in Watts (default) or Single Shot Energy, in Joules (Energy/Calorimeter mode).

Corrections: Apply a Multiplication Factor and/or an Offset to your measurements.

Trigger Level: Set the Trigger Level in 0.1% steps, from 0.1% to 99.9% (in Energy mode only).

Connection: Use this option to see the list of BLU devices within range.

MULTIPLE DISPLAYS

Select the display that suits you best and watch your measurements in real time! Simply swipe the screen to switch between the various displays:

Scope: Line filling graph; grab screenshots to save & share easily with your device

Needle: Fast analog-like needle

Real Time: Real time value and corresponding bar graph

Statistics: Min, Max, Average, RMS and PTP Stability and Standard Deviation

DATA ACQUISITION

The Acquisition screen allows you to enter the parameters for data acquisition:

Power Mode: Choose a sample rate (number of measurements per interval of time) and a duration (in days, hours, minutes and seconds) for the data acquisition.

Energy Mode: Choose a sampling rate (1 pulse out of X pulses) and a duration (total number of pulses) for the acquisition of data.

Once the acquisition is complete, you can export the data to any of the data-sharing apps installed on your mobile device, or send it by email