

FOTIA SERIES

Industrial Green nanosecond laser



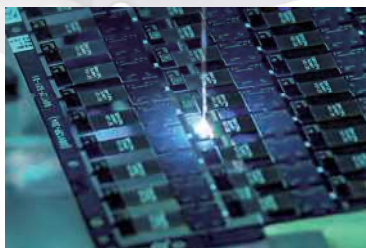
Features & Benefits:

FOTIA-532, including 5 W and 10 W model, has pulse energy up to 100uJ and repetition rate from 30K-150K. The low-frequency lasers can be customized according to customer's demand.

It can be operated through TTL level signals and external control PWM pulse width modulation signals. The PWF function allows customers to adjust the power output of the laser under internal control mode through software.

Both air-cooled and water-cooled versions are available for the FOTIA-532 laser, which makes it adaptable to various environments. The connection cable between the laser head and the controller can be customized according to customer's demand. Then, the laser can meet the requirement of various optical paths and mechanical designs.

The short pulse width ($<15\text{ns}@50\text{k}$), excellent beam quality ($M^2<1.2$) and beam roundness ($>90\%$) make it a perfect choice for PCB marking, glass marking, glass engraving, and so on.



PCB marking



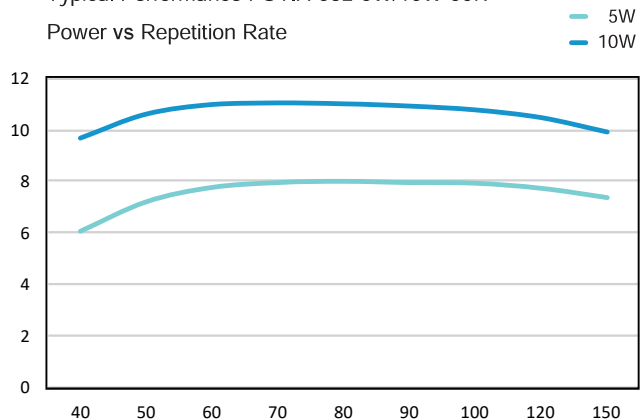
Glass marking



Glass engraving

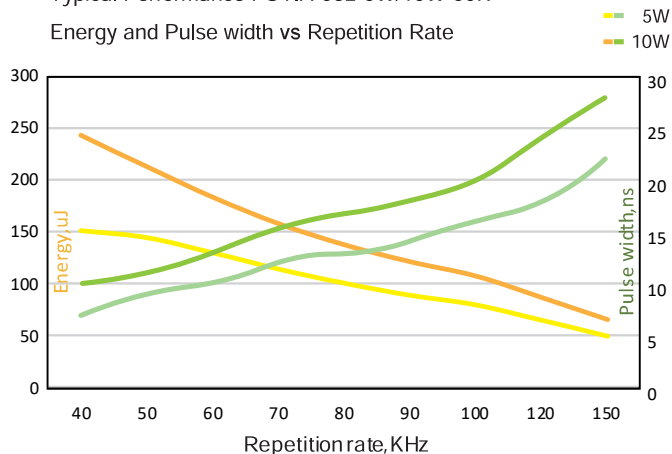
Typical Performance FOTIA-532-5W/10W-50K

Power vs Repetition Rate



Typical Performance FOTIA-532-5W/10W-50K

Energy and Pulse width vs Repetition Rate

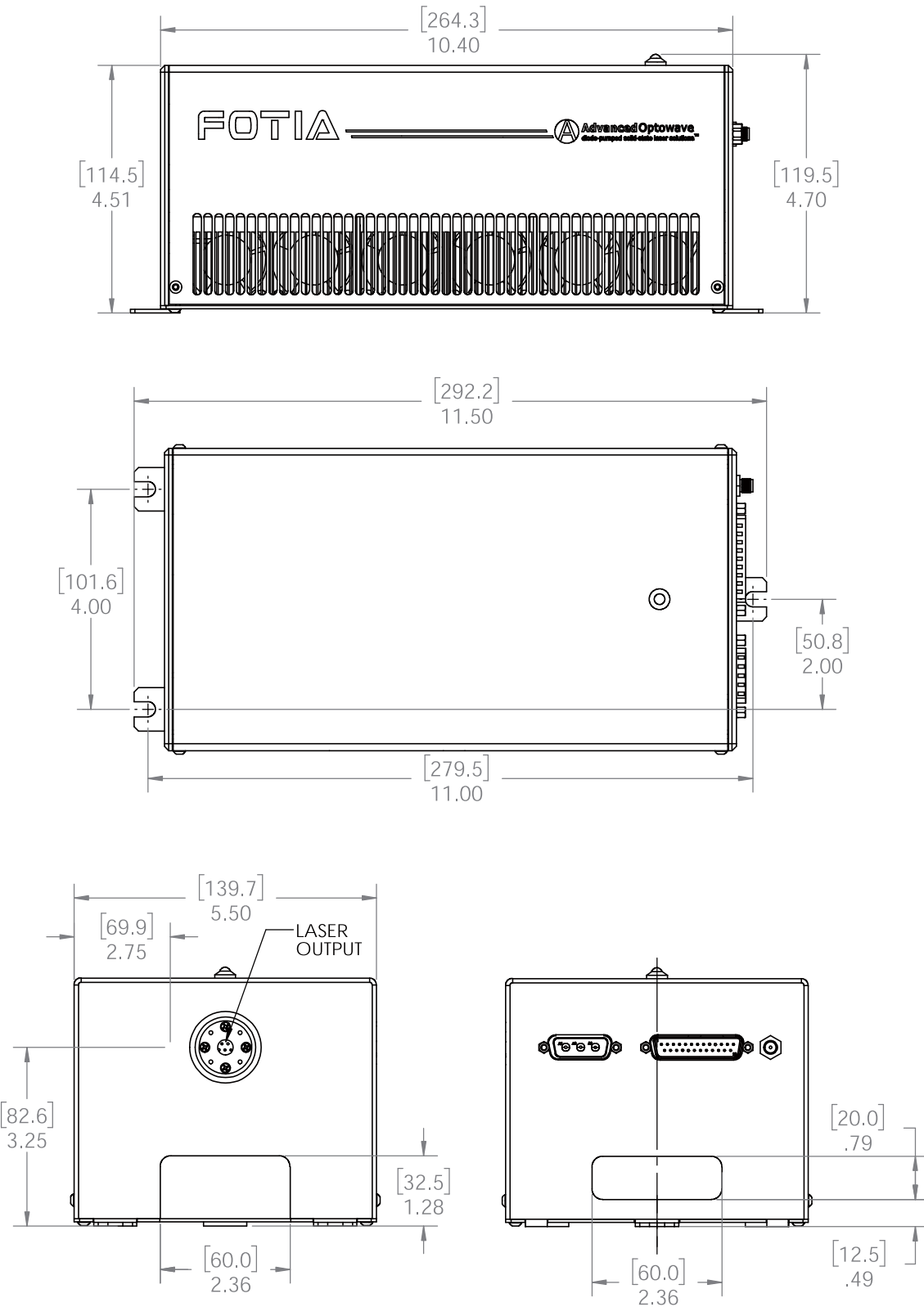


FOTIA 532

Specification	532-5W-50K	532-10W-50K
Wavelength (nm)	532	
Average Power (Watts)	5	10
Energy (μJ)	>100	>200
Specified Repetition Rate(kHz)	50	
Repetition Rate (kHz)	30 ~ 150	
Pulse Width (ns)	<15	
Beam Quality (M')	< 1.2	
Beam Roundness (%)	> 90	
Beam Diameter (mm)	~0.5	
Beam Divergence (mRad)	< 1.5	
Point Stability (μrad/°C)	< 20	
Polarization Ratio	100:1 Linear, Horizontal	
Pulse-to-Pulse Stability (% RMS)	< 3	
Average Power Stability(% over 12 hours)	< 3	
Cold Start Warm-Up (mins.)	< 40	
Standby Warm-Up (mins.)	< 10	
Operational Temperature Range (°C)	15-30°C	
Operation Humidity Range (%)	20 to 80, non-condensing	
Storage Temperature Range (°C)	- 20 to 50	
Storage Humidity Range (%)	20 to 80, non-condensing	
Input Voltage (VDC)/Rated Power(W)	24/450	
Communication	RS232	
Cooling	Air/Water	
Laser head (kg)	5.24	
controller (kg)	3.9	

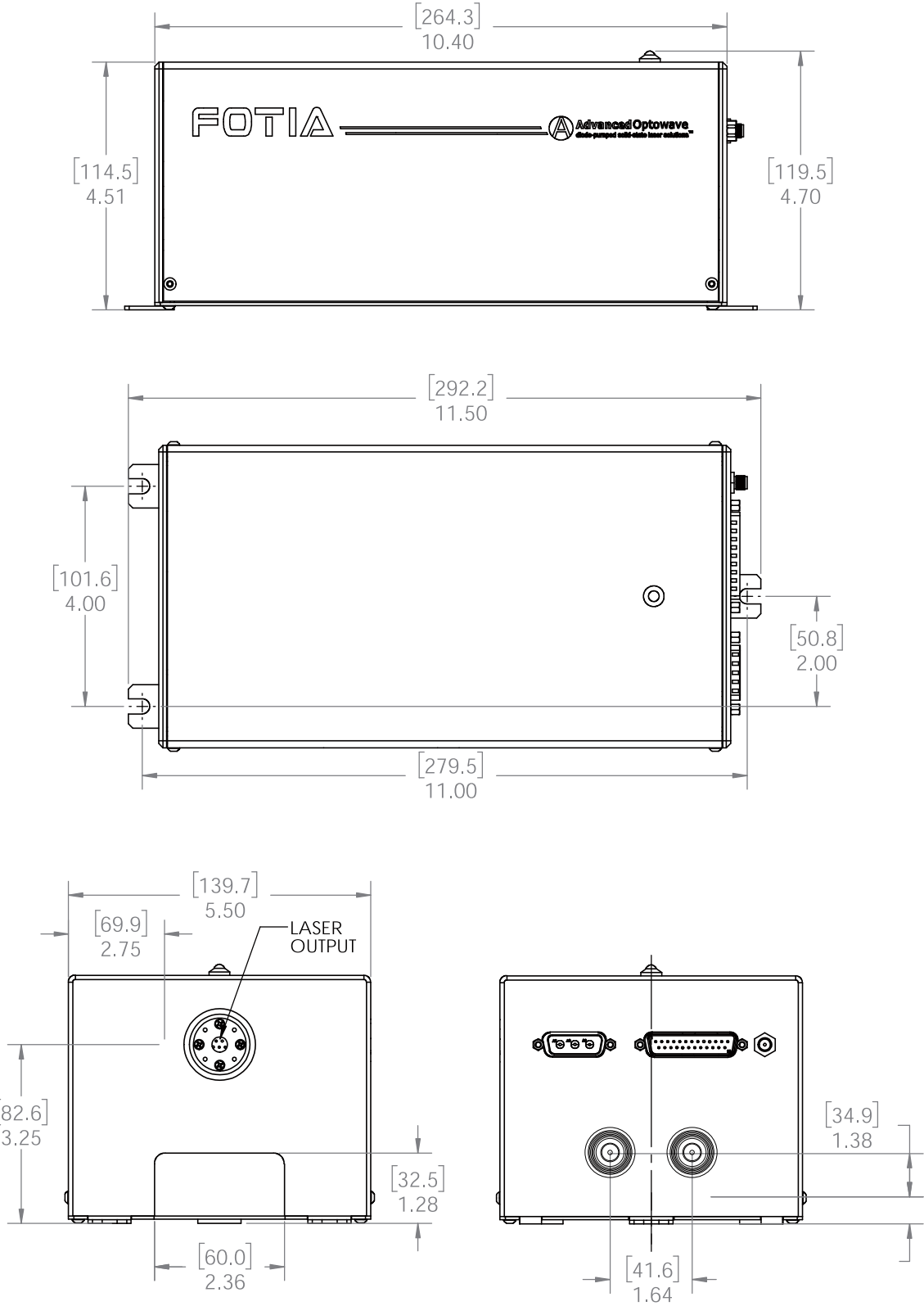
FOTIA SERIES

FOTIA-532 (air-cooled) Laser Dimensions



FOTIA SERIES

FOTIA -532 (water-cooled) Laser Dimensions



FOTIA -532 (air-cooled)
Controller Dimensions

