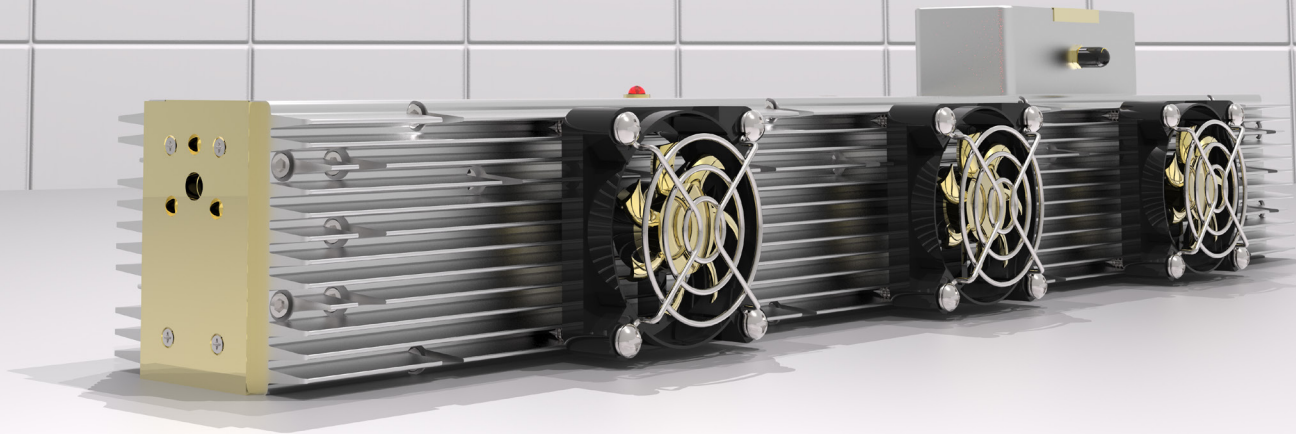


L15-D-FC



Laser Power

Wavelength	10.6 μ m
CW Power	15 (SP: 7) W
Peak Power	15 (SP: 30) W
Power Stability	$\pm 10\%$

Pulse Width Modulation Parameters

Duty Cycle	0-100 (SP: 0-30) %
Pulse Repetition Frequency	0-100KHz

Dimensions & Weight

Laser Weight	7.5 lbs
Dimensions L x W x H	20.2 x 4.5 x 3.7 inch
RF Driver Weight	2.5 lbs

Beam Characteristics

Beam Waist Diameter	2.4mm
Waist Location	Output Coupler
Mode Quality	$M^2 \leq 1.1$
Full Divergence Angle	5.5 mrad
Rise and Fall time	200 (SP: 100) μ s
Polarization	Random, Linear

DC Power Requirements

RF Driver	28 (SP: 48) V
-----------	---------------

Heat & Cooling

Heat Dissipation	≤ 300 W
Cooling Requirement	Fan Cooled
Working Temperature	5°C to 40°C

Notes

Power Stability calculated in CW at thermal equilibrium

$$+ \frac{P_{max} - P_{min}}{P_{max} + P_{min}}$$

Beam specifications measured at: $\frac{1}{e^2}$

All measurements taken at the strongest line. All are specifications are subject to change without notice.



ACCESS LASER
Member of the TRUMPF Group

