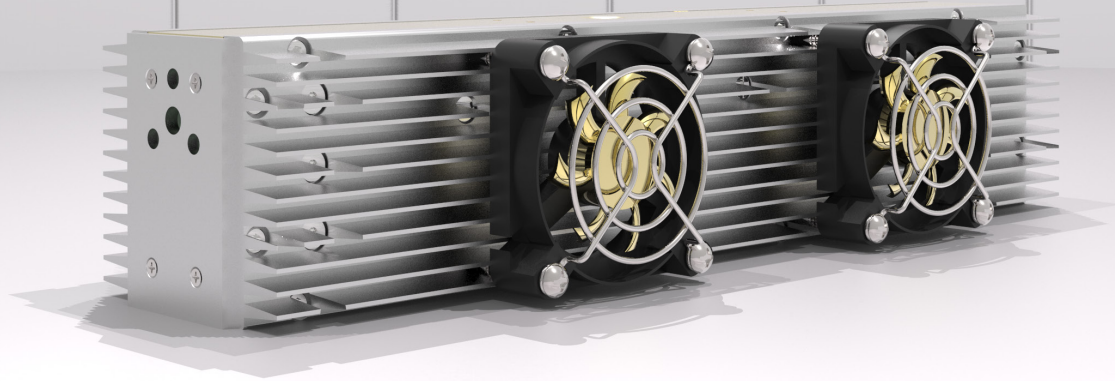


L5-D-FC



Laser Power

Wavelength	10.6 μ m
CW Power	5 (SP: 4) W
Peak Power	5 (SP: 20) W
Power Stability	$\pm 5\%$

Beam Characteristics

Beam Waist Diameter	2.4 mm
Waist Location	Output Coupler
Mode Quality	$M^2 \leq 1.1$
Full Divergence Angle	5.5 mrad
Rise and Fall time	200 (SP: 100) μ s
Polarization	Random, Linear

Pulse Width Modulation Parameters

Duty Cycle	0-100 (SP: 0-30) %
Pulse Repetition Frequency	0-100 kHz

DC Power Requirements

RF Driver	28 (SP: 48) V
TC2A	12 V

Dimensions & Weight

Laser Weight	4.5 lbs
Dimensions L x W x H	12.6 x 4.5 x 2.5 inch
RF Driver Weight	2.5 lbs

Heat & Cooling

Heat Dissipation	≤ 150 W
Cooling Requirement	Fan Cooled
Working Temperature	5 $^{\circ}$ C to 40 $^{\circ}$ C

Notes

Power Stability calculated in CW at thermal equilibrium

$$+ \frac{P_{max} - P_{min}}{P_{max} + P_{min}}$$

Beam specifications measured at: $\frac{1}{e^2}$

Average power may exceed listed value. All specifications are measured at the strongest line and are subject to change without notice.



ACCESS LASER
Member of the TRUMPF Group

